



# Model: Solatube SkyVault Series (740 mm/29 in. Daylighting System) CE

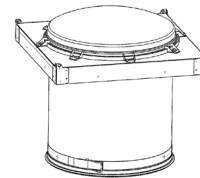
Project: \_\_\_\_\_ Location: \_\_\_\_\_ Type: \_\_\_\_\_

Product Specifications Appear in US CSI Division 08, Section 08 62 23. For budgeting and quotations use only. Qty: \_\_\_\_\_

Model		Capture Zone				Transfer Zone		Delivery Zone			Options					
<u>S</u>	<u>M</u>	<u>7</u>	<u>4</u>	<u>D</u>	<u>S</u>	-	<input type="text"/>	<input type="text"/>	<input type="text"/>	<input type="text"/>	-	<input type="text"/>	-	<input type="text"/>	-	<input type="text"/>
1		2	3	3a	4	5		5a	6	7	8	9				

## 1 Model

**Solatube® M74 DS** Solatube M74 DS (740 mm /29 in. Daylighting System)  
Open Ceiling



## Capture Zone

### 2 Collector

**C** Collector with Raybender HD and LightTracker Technologies  
Leave blank if not desired.



### 3 Domes

**DP** Polycarbonate Dome  
**DPP** Polycarbonate Outer Dome + PETG Inner Dome



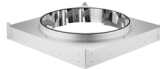
### 3a Dome Options (Leave blank if not desired)

**SG** Security Guard\*  
\*Factory Installed



### 4 Flashings

**FC** Curb Cap  
(Curb by Others)

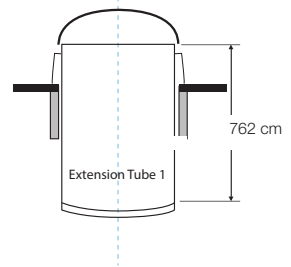


## Transfer Zone

### 5 Extension Tubes Required\*

Run measured from top of flashing to diffuser along centerline of tubing using 60 cm lengths. See 4a for optional 120 cm length.

- |  |  |
|--|--|
| <b>E1</b> One Extension Tube – Max Run = ~760 mm     | <b>E7</b> Seven Extension Tubes – Max Run = ~4265 mm               |
| <b>E2</b> Two Extension Tubes – Max Run = ~1345 mm   | <b>E8</b> Eight Extension Tubes – Max Run = ~4850 mm               |
| <b>E3</b> Three Extension Tubes – Max Run = ~1930 mm | <b>E9</b> Nine Extension Tubes – Max Run = ~5435 mm                |
| <b>E4</b> Four Extension Tubes – Max Run = ~2515 mm  | <b>E10</b> Ten Extension Tubes – Max Run = ~6020 mm                |
| <b>E5</b> Five Extension Tubes – Max Run = ~3100 mm  | <b>EXX</b> Total Run Length to be Determined by Bidding Contractor |
| <b>E6</b> Six Extension Tubes – Max Run = ~3685 mm   |  |



### 5a Product Options (Leave blank if not desired)

\*At least one 60 cm or 120 cm extension tube required for diffuser

- EL** Optional 1200 mm Extension Tube (Substitute one 1200 mm for two 600 mm above)
- TIP** Thermal Insulation Panel and Nominal 600 mm Extension Tube (2 x 300 mm transition tubes\*)

\*2 x 300 mm transition tubes replace 1 x 600 mm extension tube.



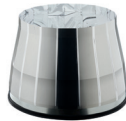
## Delivery Zone

### 6 Bottom Assembly

**B** Base Unit



**A** Amplifier\*



\*The Amplifier mounts to the bottom extension tube, adding an additional 60 cm to the overall tube run.

### 7 Diffuser Lens

**L2** Prismatic Diffuser



**L2P** Prismatic Diffuser, Polycarbonate



### 8 Measurement Standard

**M** Metric

**I**

Imperial

## Options

### 9 After Market Accessory Program

**AM** After Market Accessory

Example

#### SM74DS-O-DPP-FC-E2-B-L2-M

Solatube® SkyVault Series M74DS-O (740 mm/29 in. Daylighting System), Polycarbonate Outer Dome + PETG Inner Dome, Two Extension Tubes, Base Unit and Prismatic® Diffuser. For metric installations.