



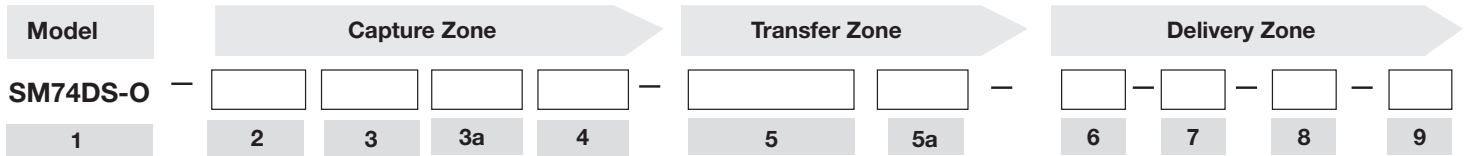
# Model: Solatube SkyVault Series (740 mm/29 in Daylighting System)

Project: \_\_\_\_\_

Location: \_\_\_\_\_

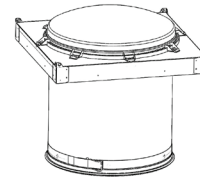
Type: \_\_\_\_\_

Product Specifications Appear in CSI Division 08, Section 08 62 23. For budgeting and quotations use only. Qty: \_\_\_\_\_



**1 Model**

**Solatube® M74 DS** Solatube M74 DS (740 mm/29 in Daylighting System)  
Open Ceiling



## Capture Zone

**2 Collector** (Leave blank if not desired)

**C** Collector with Raybender HD and LightTracker Technologies



**3 Domes**

**DP** Polycarbonate Dome

**DPP** Polycarbonate Outer Dome + PETG Inner Dome



**3a Dome Options** (Leave blank if not desired)

**SG** Security Guard\*



\*Factory Installed

**4 Flashings**

**FC** Curb Cap  
(Curb by Others)



## Transfer Zone

### 5 Extension Tubes Required\*

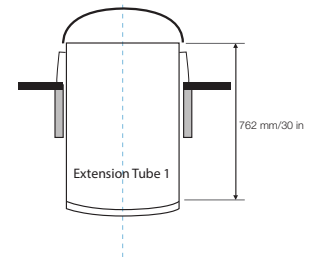
Run measured from top of flashing to diffuser along centerline of tubing using 600 mm/24 in lengths. See 5a for optional 1200 mm/48 in length.

- |  |  |
|--|--|
| <b>E1</b> One Extension Tube – Max Run = ~760 mm/30 in     | <b>E7</b> Seven Extension Tubes – Max Run = ~4200 mm/168 in        |
| <b>E2</b> Two Extension Tubes – Max Run = ~1300 mm/53 in   | <b>E8</b> Eight Extension Tubes – Max Run = ~4800 mm/191 in        |
| <b>E3</b> Three Extension Tubes – Max Run = ~1900 mm/76 in | <b>E9</b> Nine Extension Tubes – Max Run = ~5400 mm/214 in         |
| <b>E4</b> Four Extension Tubes – Max Run = ~2500 mm/99 in  | <b>E10</b> Ten Extension Tubes – Max Run = ~6000 mm/237 in         |
| <b>E5</b> Five Extension Tubes – Max Run = ~3000 mm/122 in | <b>EXX</b> Total Run Length to be Determined by Bidding Contractor |
| <b>E6</b> Six Extension Tubes – Max Run = ~3600 mm/145 in  |  |

### 5a Extension Tube Options (Leave blank if not desired)

\*At least one 600 mm/24 in or 1200 mm/48 in extension tube required for diffuser

- EL** Optional 1200 mm/48 in Extension Tube (Substitute one 1200 mm/48 in for two 600 mm/24 in above)
- R** Trim Ring
- TIP** Thermal Insulation Panel and Nominal 24" Extension Tube (2 x 300 mm/12 in transition tubes\*)
- \*2 x 300 mm/12 in transition tubes replace 1 x 600 mm/24 in extension tube.



## Delivery Zone

### 6 Options (Leave blank if not desired)

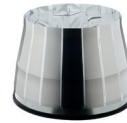
- D1** 0-10v Daylight Dimmer and Nominal 600 mm/24 in Extension Tube (2 x 300 mm/12 in transition tubes\*)
- \*2 x 300 mm/12 in transition tubes replace 1 x 600 mm/24 in extension tube.

### 7 Bottom Assembly

- B** Base Unit



- A** Amplifier\*



\*The Amplifier mounts to the bottom extension tube, adding an additional 601 mm/23.7 in to the overall tube run.

### 8 Diffuser Lens

- L2** Prismatic Diffuser



### 9 Measurement Standard

- M** Metric      **I** Imperial

### Accessories (Optional. Order separately)

\*transformer for 0-10V Dimmer

- S1** Low voltage 0-10V switch (white) required to operate Solatube 0-10V Daylight Dimmers. Only one switch is required per forty-eight (48) synchronously controlled dimmers. (For 'D1' only) Note: For use when no controls have been specified and customer is looking for an off-the-shelf solution. If different controls have been specified please source those from others.

**TR20** UL Listed Class 2 Transformer 24 VAC, Rated 20 VA

**TR96** UL Listed Class 2 Transformer 24 VAC, Rated 96 VA

### Example

#### SM74DS-O-DPP-FC-E2-B-L2-M

Solatube® SkyVault Series M74DS-O (740 mm/29 in Daylighting System), Polycarbonate Outer Dome + PETG Inner Dome, Two Extension Tubes, Base Unit and Prismatic® Diffuser. For metric installations.